

State of Wyoming Corner Record

(In compliance with the *CORNER PERPETUATION AND FILING ACT*, Wyoming Statutes, 1997, Section 33-29-140, et seq., and the Rules and Regulations of the Board of Registration for Professional Engineers and Professional Land Surveyors)

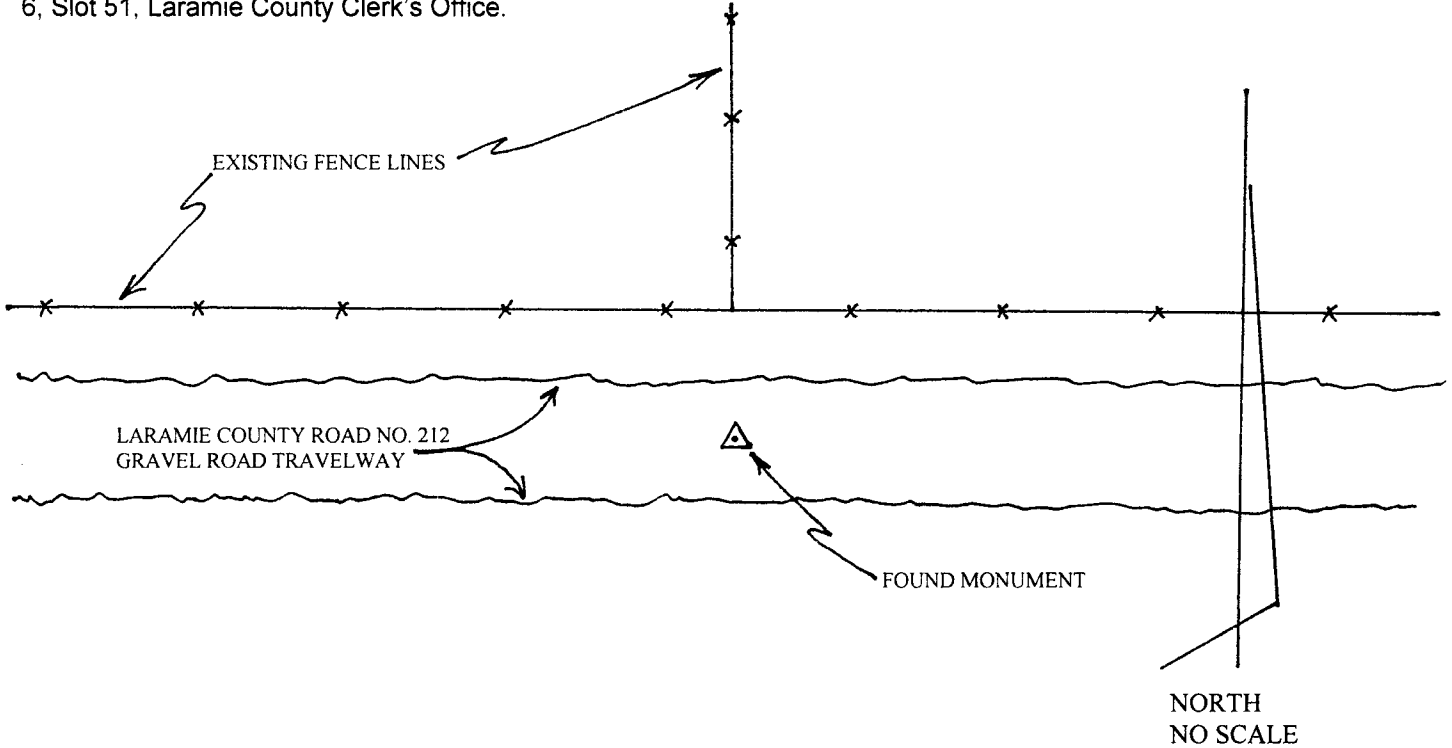
Reverse side of this form may be used if more space is needed.

Record of original survey and citation of source of historical information (if corner is lost or obliterated). Description of corner monumentation evidence found and/or monument and accessories established to perpetuate the location of this corner. Sketch of relative location of monument, accessories, and reference points with course and distance to adjacent corner(s) (if determined in this survey). Method and rationale for reestablishment of lost or obliterated corner.

Section Corner: 17, 18, 19 and 20, T14N, R61W, 6th PM, Laramie County, Wyoming.

GLO record: 20"x8"x6" Lime Stone.

Found: 2 1/2" dia. Aluminum Survey Cap on a No.5 rebar, 8" below gravel surface of Laramie County Road No. 212; proper identification and LS 2500. Per plat of record for FOUR CORNERS SUBDIVISION, recorded April 17th, 1991 in Plat Cabinet 6, Slot 51, Laramie County Clerk's Office.



SEE MAP ON BACK OF THIS PAGE FOR TIES TO SURROUNDING CORNERS.

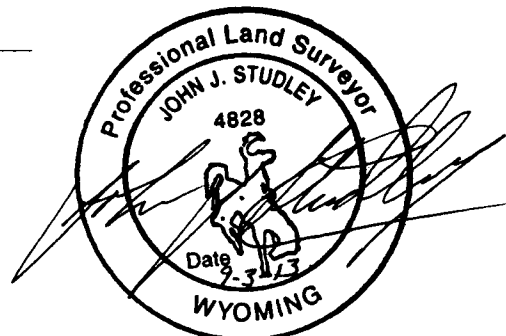
Date of Field Work: JULY 2013 Office Reference: _____

CROSS INDEX DIAGRAM

1	2	3	4	5	6	7	8	9	10	11	12	13	14	15	16	17	18	19	20	21	22	23	24	25		
A																									A	
B																									B	
C		6			5				4					3					2						C	
D																										D
E																										E
F																										F
G			7			8			9					10					11							G
H																										H
J																										J
K																										K
L				18			17			16				15					14							L
M																										M
N																										N
O																										O
P				19			20			21				22					23							P
Q																										Q
R																										R
S																										S
T				30			29			28				27					26							T
U																										U
V																										V
W																										W
X				31			32			33				34					35							X
Y																										Y
Z																										Z
	1	2	3	4	5	6	7	8	9	10	11	12	13	14	15	16	17	18	19	20	21	22	23	24	25	

Land Surveyor / Firm / Address
Studley Land Surveying, PC
John J. Studley, PLS No. 4828
615 West Dale Blvd.
Cheyenne, WY 82009
 Telephone: 307-287-4755

This corner record was prepared by me or under my direction and supervision.
 SEAL & SIGNATURE



Corner Name: Section Corner common to Sections: 17, 18, 19 & 20 T 14 N R 61 W : 6th P.M. Cross-Index No.: N-5
 SBRPEPLS/PLSW: March 1994; PLSW January 1998

N.W. COR.
SEC. 17
LS 519

2640' (R)
2646.44' (M)

N. ¼ COR.

2640' (R)
2646.44' (M)

N.E. COR.
SEC. 17
LS 6097

SECTION 17
T.14N., R.61W., 6TH P.M.
LARAMIE COUNTY, WYOMING

S.W. COR.
SEC. 17
LS 2500

2643.78' (M)
2640' (R)

S. ¼ COR.

2643.78' (M)
2640' (R)

S.E. COR.
SEC. 17
LS 2500

N
O
R
T
H

SCALE
1" = 1,000'



RECORDED 9/04/2013 AT 8:58 AM REC# 623398 BK# 2356 PG# 1236
DEBRA K. LATHROP, CLERK OF LARAMIE COUNTY, WY PAGE 2 OF 2